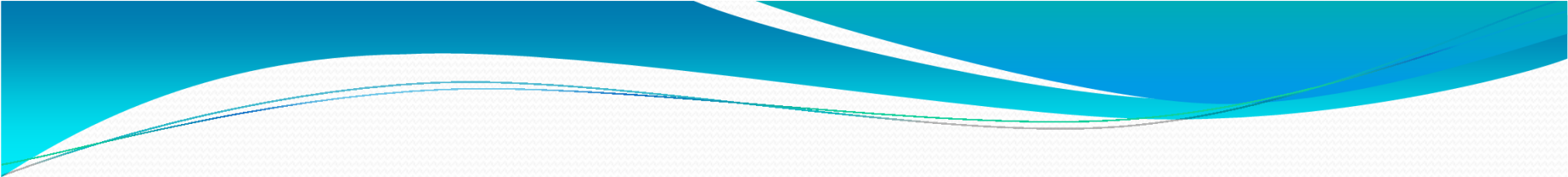




# **AAROGYASRI HEALTH CARE TRUST**

## **PLANNING & COORDINATION**

- 
- Existing Health scenario
  - Over view of the Schemes
  - Inputs on Various Schemes



# Rajiv Aarogyasri Health Insurance Scheme

Quality Medicare For All



# HEALTH SCENERIO

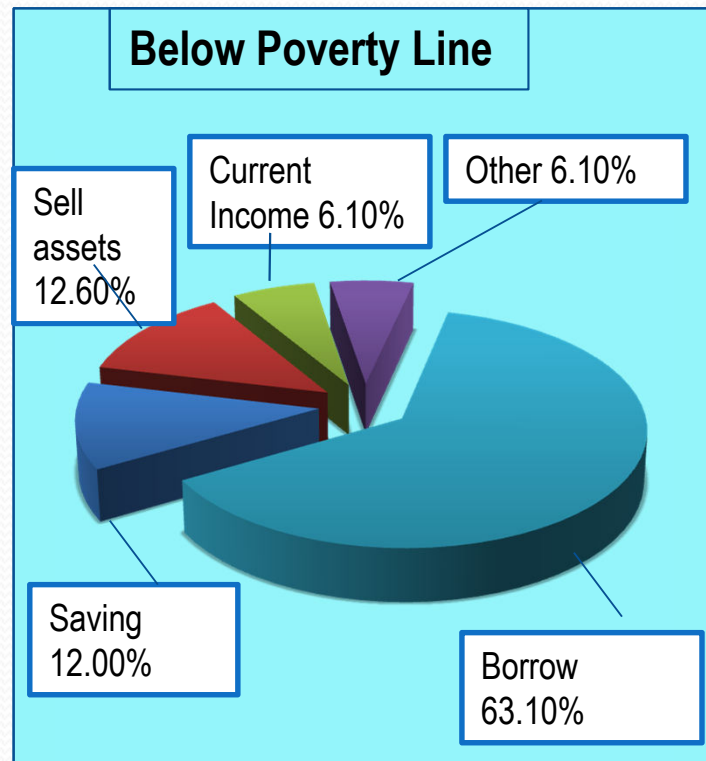
- Govt. Sector taking care of Primary and secondary health needs
- Limited Tertiary care resources in Government Hospitals
- Exponential growth of Health Care in private sector
- Prohibitory cost of therapy
- Health inequalities in society

# Conceptualization

- Institutionalize state help
- PPP Model
- Tailor-made policy
- Or through self funded scheme
- Implementation through independent Trust



# Background Hospitalization Expenses in AP



✓ Escalating health care costs: leading to rural indebtedness

✓ Large proportion of people, especially below poverty line borrow money or sell assets to pay for hospitalization

# Origin & Expansion of Aarogyasri



ORIGIN	EXPANSION			
	DATE	DISTRICTS	PROCEDURES	SCHEME
CMRF (2004)				
↓				
CHILD CARDIAC SURGERIES (Aug, 2004)	01.04.2007	3	163	Aarogyasri - I
↓				
AAROGYASRI - I (April, 2007)	05.12.2007	8	210	Aarogyasri - I
↓				
AAROGYASRI - II (July, 2008)	05.04.2008	13	272	Aarogyasri - I
↓				
CMCO (July, 2008)	17.07.2008	23	865	Aarogyasri - I (Insurance) Aarogyasri - II (Trust) CMCO Referrals (Trust)
↓				
JOURNALIST Scheme (Oct, 2009)	14.11.2008	23	942	Aarogyasri - I (Insurance) Aarogyasri - II (Trust) CMCO Referrals (Trust)

# Aim & Implementation



## AIM

Financial protection to 'Below Poverty Line' (BPL) population for medical treatment requiring Hospitalization

## IMPLEMENTATION

Public – Private - Partnership (PPP) Mode



**AAROGYASRI HEALTH CARE TRUST**

**REGULATOR**



**INSURANCE COMPANY**

**RISK COVERAGE**



**NETWORK HOSPITALS**

**SERVICE PROVIDER**



**DISTRICT ADMINISTRATION**

**MOBILISATION**



**HEALTH WORKERS**

**AAROGYAMITHRAS**

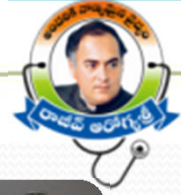


**SOFTWARE COMPANY**

**TECHNOLOGY SOLUTIONS**



# Cashless Packages



Health Camps



Quality Service



Free Diagnostic Service



Free Food Service



Transport Charges



Free Follow up Medicine

# Main Features & Progress



## UNIVERSAL COVERAGE

All BPL Families 2.2 Crores

## CASHLESS TREATMENT

Up to Rs 2 lakhs in a year

## HEALTH WORKERS

3528 Aarogyamithras

## SIMPLE PROCEDURE

Health Card / White Card

## COST

Borne by the Government

## DISEASES

Identified

## PACKAGES

For end-to-end treatment

## CHOICE OF HOSPITALS

Left to patients

## MONITORED

On-line : 24 hour basis

## IMPLEMENTATION

\*Aarogyasri I (23 Districts) & Aarogyasri II (13 Districts) through Insurance Co.

\*\* Aarogyasri II (10 Districts) through Aarogyasri Health Care Trust.

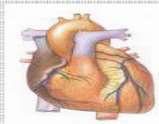




Phase I	Phase II	Phase III	Phase IV	Phase V
Mahbubnagar	Rangareddy	Medak	Adilabad	Nizamabad
Ananthapur	Nalgonda	Karimnagar	Kurnool	Warangal
Srikakulam	Chittoor	Prakasam	Hyderabad	Khammam
	West Godavari	YSR	Visakhapatnam	Guntur
	East Godavari	Nellore	Vizianagaram	Krishna



# Disease



## CRITERIA OF SELECTION

- Emergency and Life saving in nature
- Requiring Specialist Doctors & Special Equipment
- Not ordinarily available in Govt. Hospitals (Area/CHC )
- Verifiable Diagnostic and Post treatment Protocols
- Not covered by other Government schemes
- 938 procedures in 31 systems

## MEDICAL (159 PROCEDURES)

- Critical care
- General Medicine
- Infectious Diseases
- Pediatric Intensive Care
- Neonatal Intensive care
- Pediatric General
- Cardiology
- Nephrology

- Neurology
- Pulmonology
- Dermatology
- Rheumatology
- Endocrinology
- Gastroenterology

## SURGICAL (779 PROCEDURES)

- General Surgery
- ENT
- Ophthalmology
- Orthopedics
- Surgical Gastroenterology
- Cardio Thoracic surgery
- Pediatric Surgery
- Genito-Urinary surgery
- Neuro-surgery
- Surgical Oncology
- Medical oncology
- Radiation Oncology
- Plastic Surgery
- Polytrauma
- Prostheses
- Cochlear Implantation



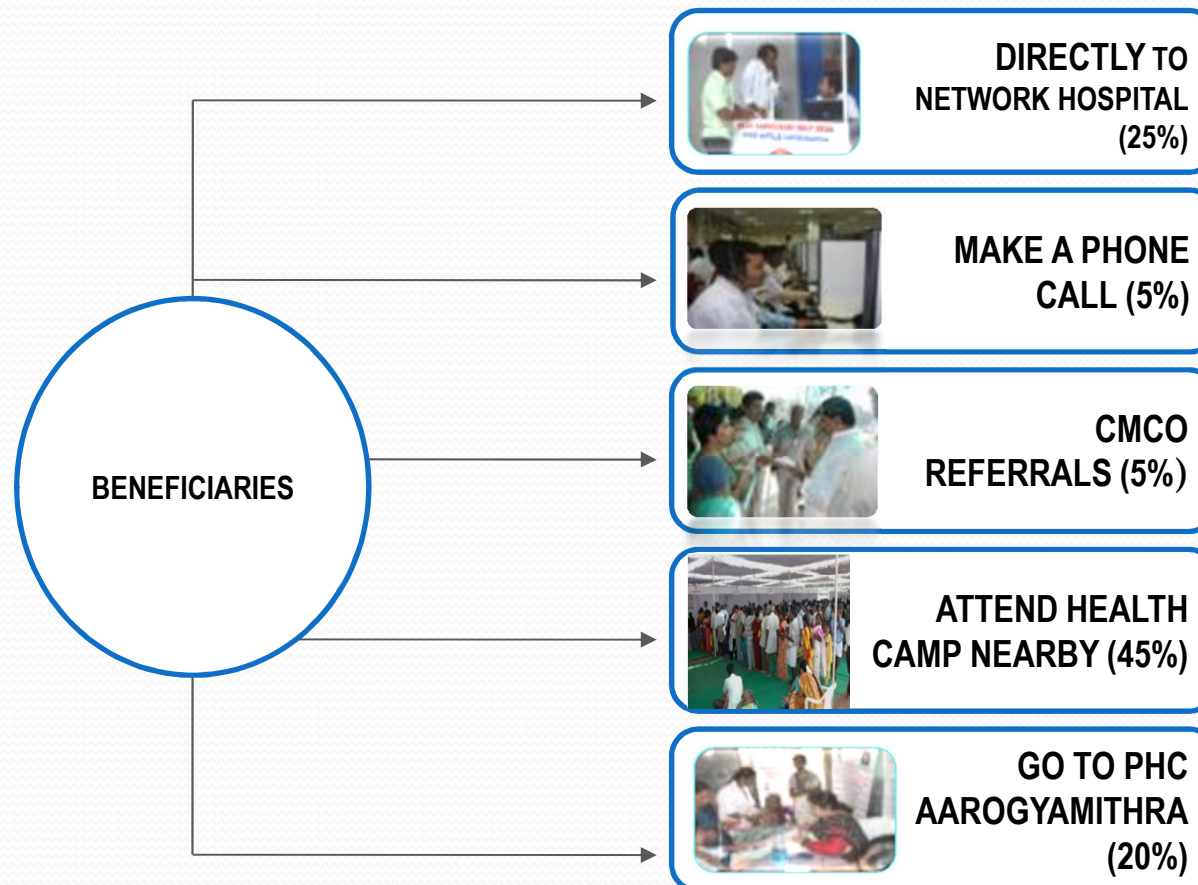
- 

[illegible]

# Patient Facilitation & Beneficiary Choice

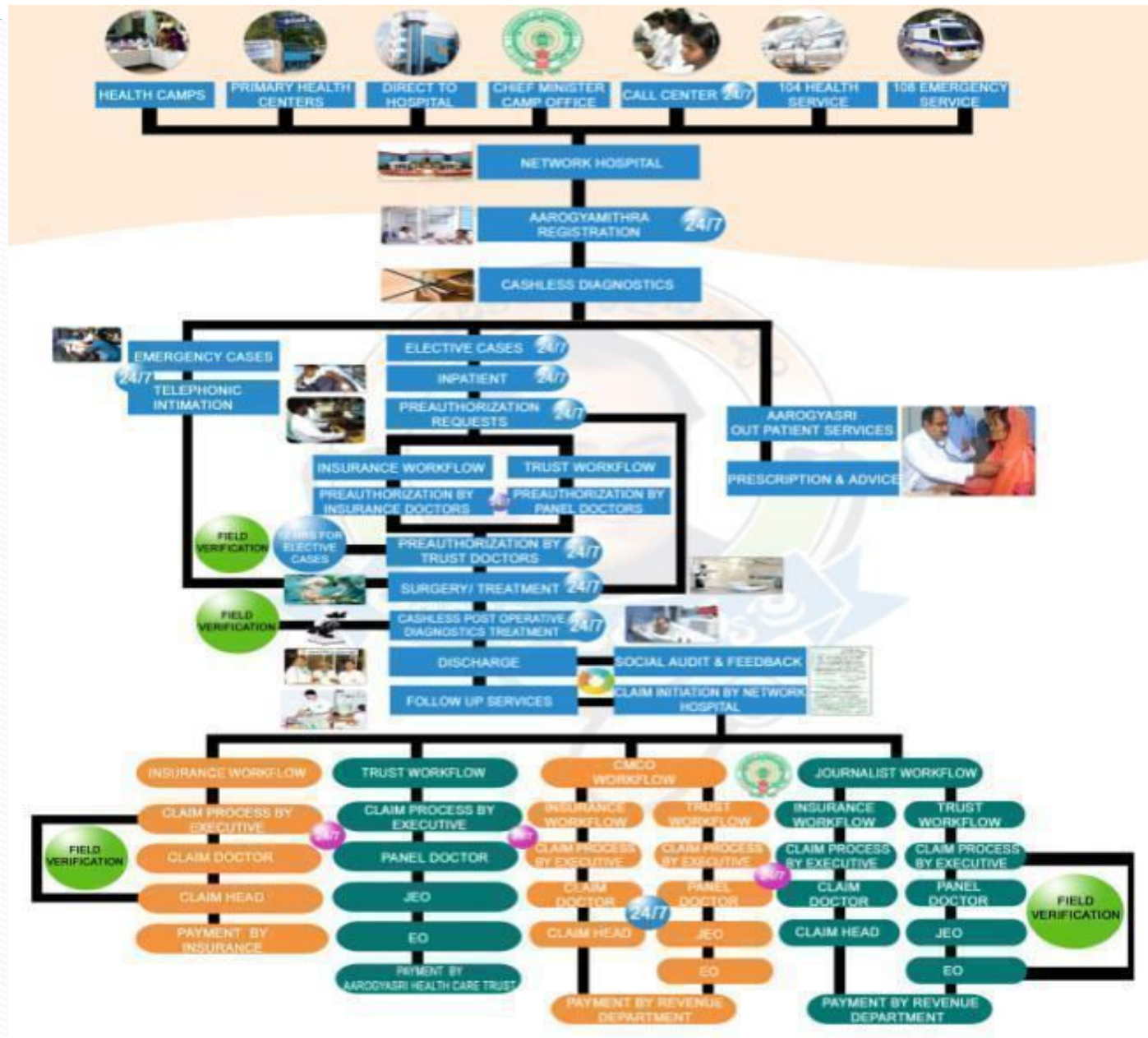


- Aarogyamithra
  - Help Desks in PHCs/Government Hospitals
  - Assistance Counters in Network Hospitals
- 24 hour call center Toll free line for this Scheme





# Patient Work Flow





## Network Hospital – Responsibilities (340 hospitals Empanelled)



- Organize Health Camps once in a week
- Separate Reception and Registration
- Free food for In-patients
- Dedicated Medical Coordinator (RAMCO-Doctor), Camp Coordinator (AMCCO)
- Free Transport to In-patient from Mandal Head Quarters
- Provide Computer, Printer, Scanner, Digital Camera, Webcam and 2 MBPS connectivity
- Follow-up consultation and distribution of follow-up medicines provided by the Trust
- Cashless services
- Free consultation, diagnostics and treatment, irrespective of surgery





# Aarogyasri ICT - Comprehensive Solutions



Complex Application > Simple to Use > Quick & Quality service

[www.aarogyasri.org](http://www.aarogyasri.org)

BPL records

Hospital Empanelment

Health Camps

Registrations

Pre Authorization

Follow ups

e-Office

Claims

Online Payments

Reports-MIS

Call Center

E Mail

Feedback

Accounts

Admin

Issue Tracker

Grievance

Service Intelligence tool

TDS

SMS Gateway

Online Donation

Digital Signature

Bio Metric



*Biometric*



*e-Mail*





**THANK YOU**